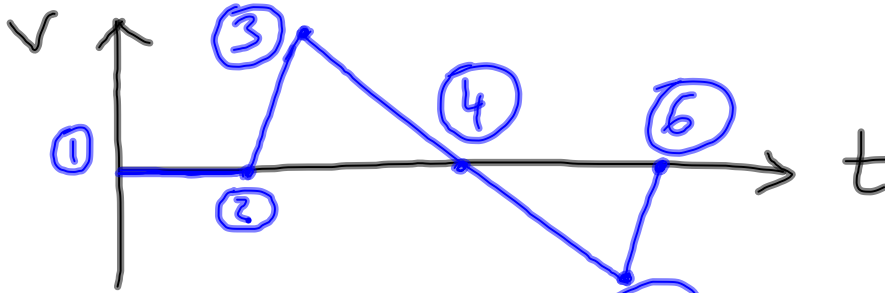


Lab - ball toss (conservation of mechanical energy)



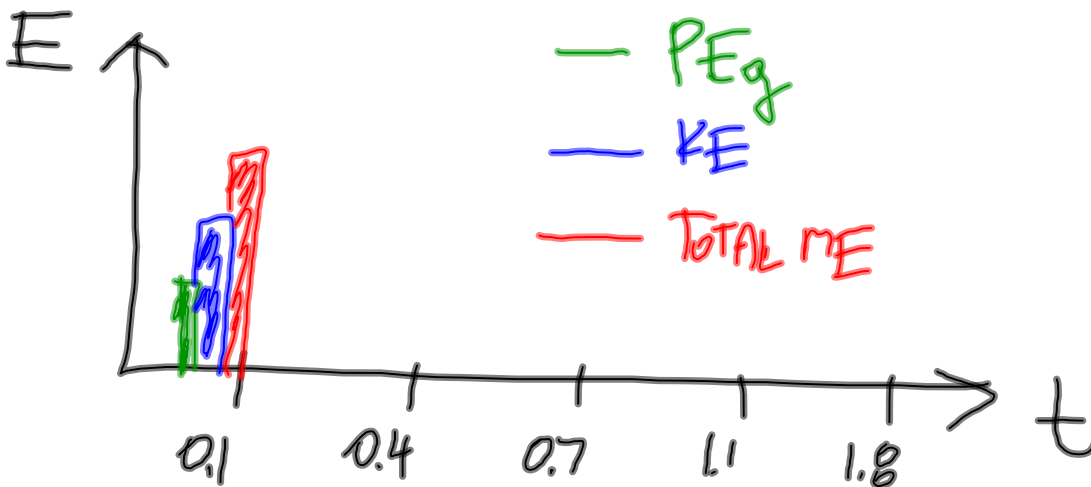
- ① IN MY HANDS AT REST
- ② START SPEED IT UP
- ③ LET GO OF THE BALL
- ④ APEX (TOP) IT STOPS
- ⑤ GOT CAUGHT
- ⑥ STOPS (AT REST)

Jan 7-12:26 PM

You need to graph by hand (using rulers) the following.
Construct a **bar graph**.

x-axis: time values from data table (5 points)

y-axis: value of PE_g - one color
value of KE - different color
value of TE - different color



Jan 6-9:24 AM