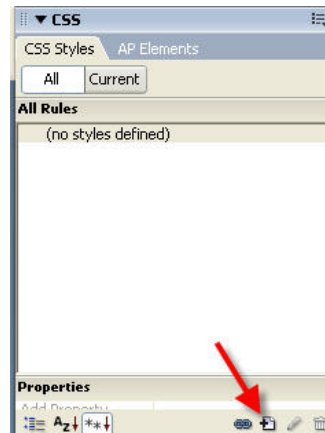
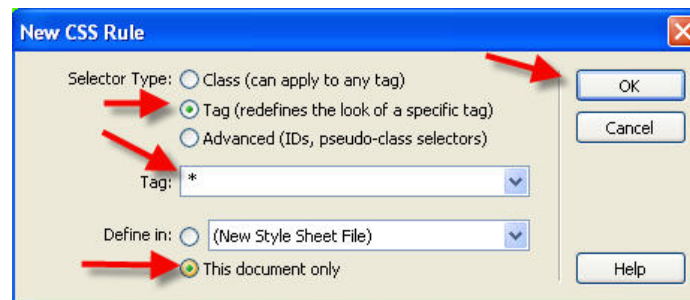


Getting Started

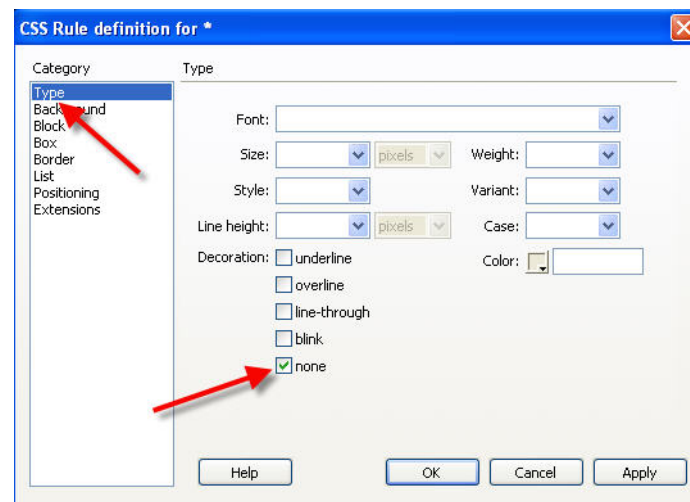
1. Download class work file `css03c.htm` into your `css` folder
2. Open the page in Dreamweaver
3. Click the "New CSS Rule" button at the bottom of the CSS pane



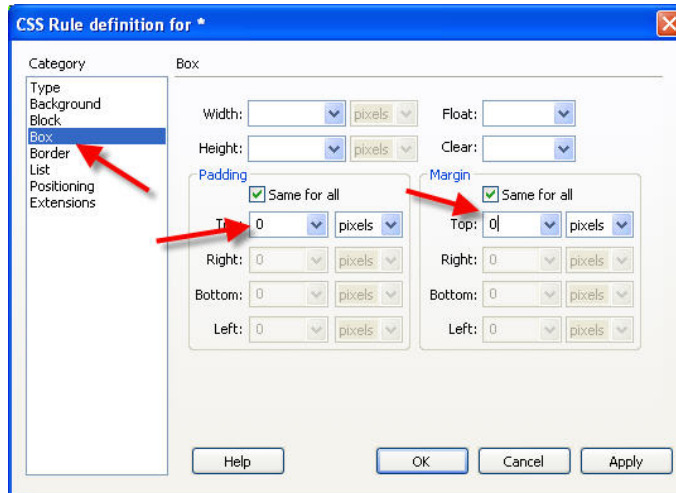
4. Pick "Tag" | type an Asterisk in the tag box | Pick "this document only" | OK



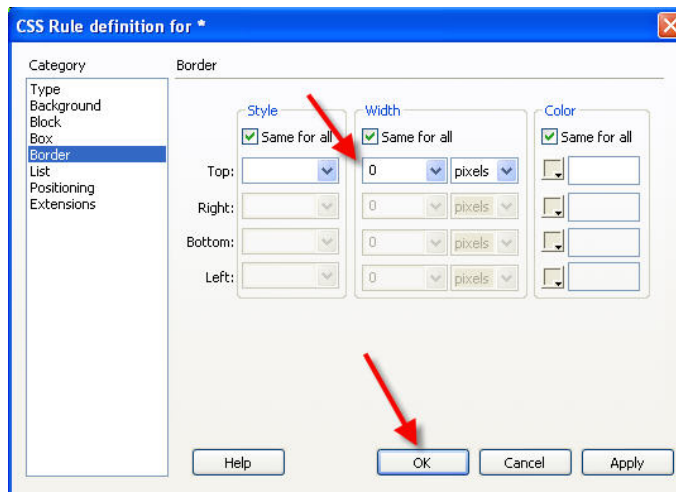
5. In the type category, under decoration, choose "none"



6. Click the Box category set the padding and margins to 0.

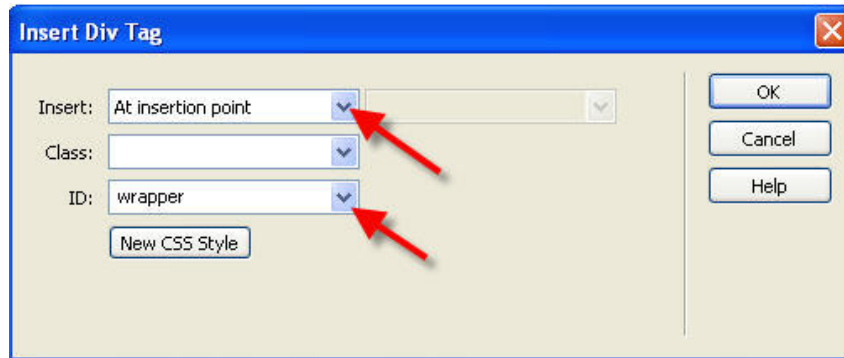


7. In the border category set the width to 0 | OK

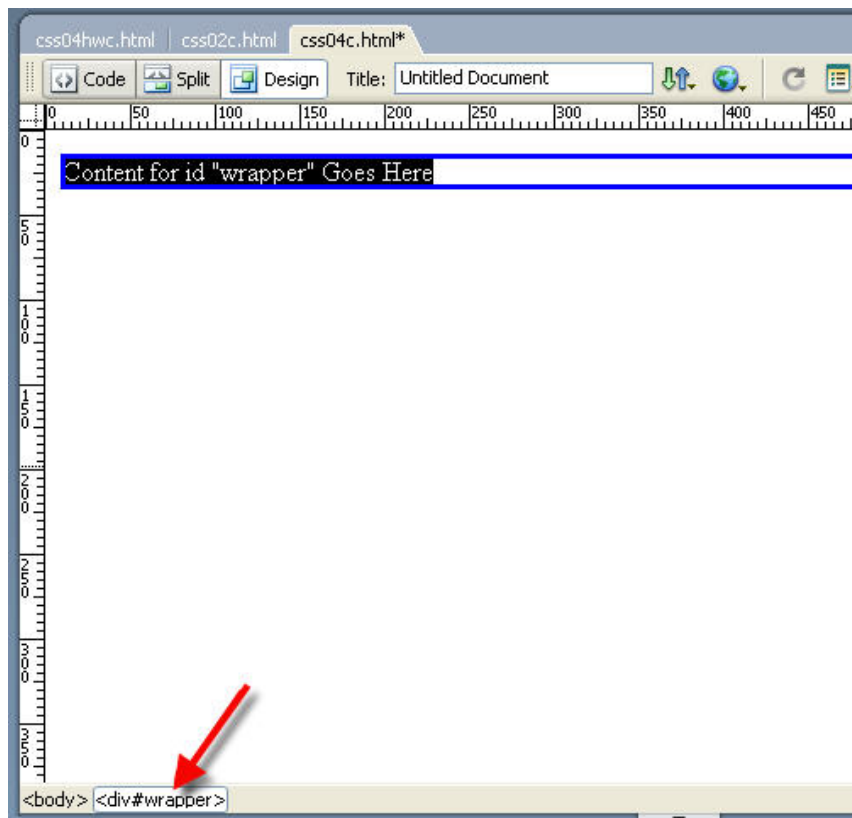


Creating the wrapper Div

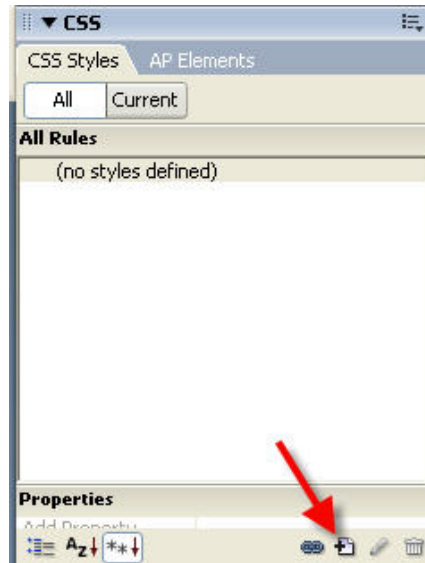
- Click at the top of the page
- Insert | Layout Object | Div Tag | Set the insert dropdown to "at insertion point" | set the ID to "wrapper" | OK



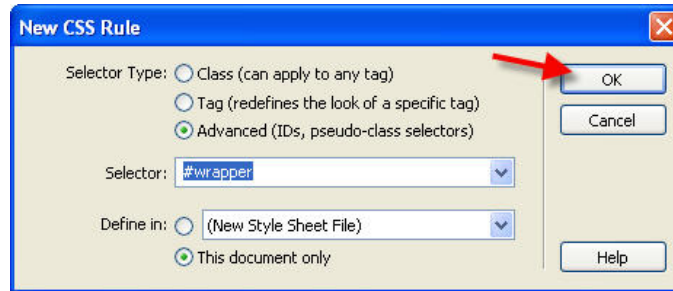
- Click on "div#wrapper" on the bottom bar



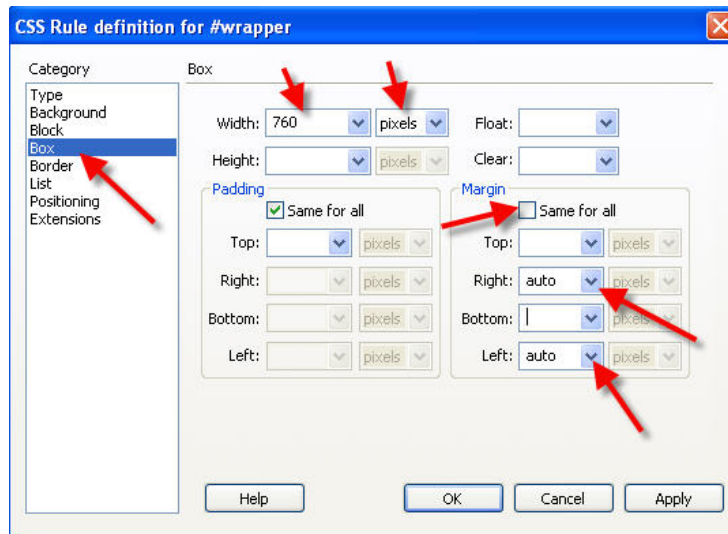
11. Click the "New CSS Rule" button at the bottom of the CSS pane



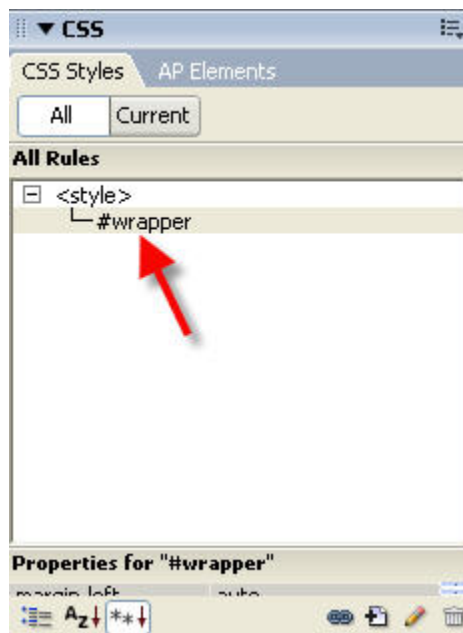
12. A new window will open click OK



13. Select "Box" | Set width to 760 pixels | Uncheck "same for all" margin setting" | set left and right margins to "auto"



14. Click the background tab and pick a background color | OK
15. Note that a wrapper tag has been created
16. Preview the page in a browser. Note that the wrapper does not occupy the full width of the page and that it is centered
17. Double click the #wrapper rule in the css pane

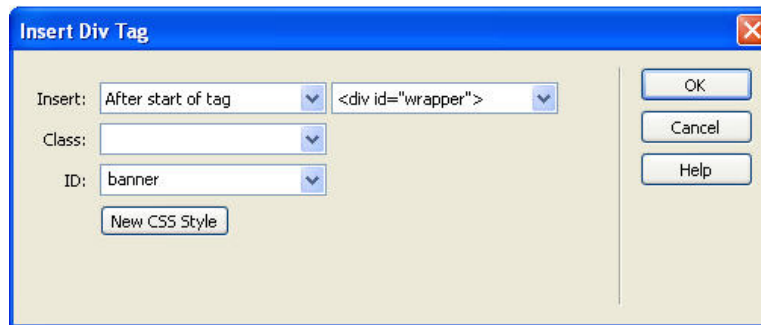


18. Return to the box category and reset the width to 960 pixels
19. Return to the background category and remove any background color

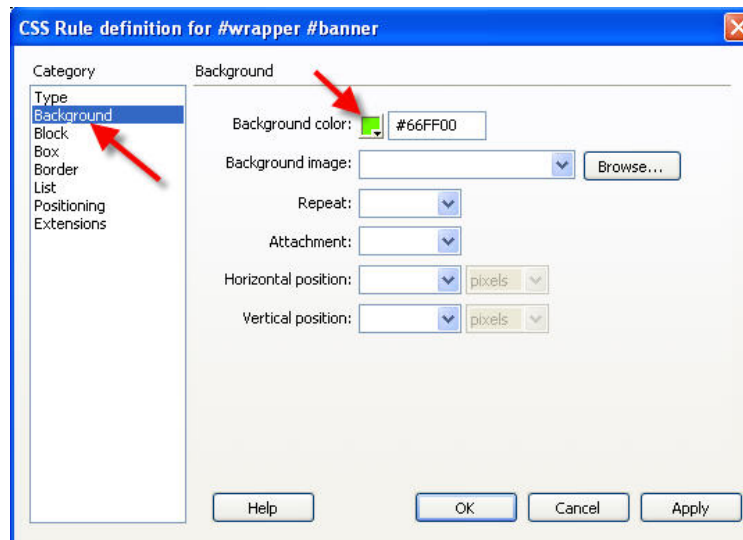
Creating Divs inside the Wrapper

Create a banner Div

20. Backspace over the text in the wrapper | Insert | Layout object | div tag | Set the insert dropdown to "after start of tag" | set the ID to "banner" | OK

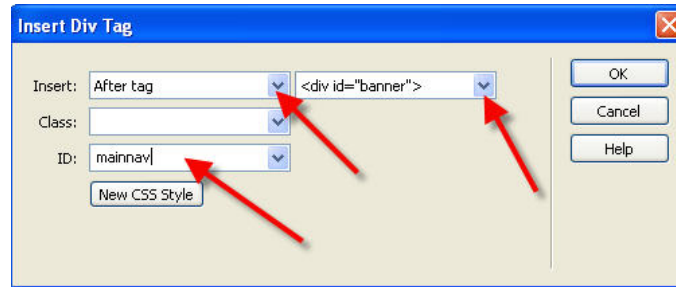


21. Click on "div#banner" on the bottom bar
22. Click the "New CSS Rule" button at the bottom of the CSS pane.
23. Click the background category | select a background color | OK



Create the mainnav Div

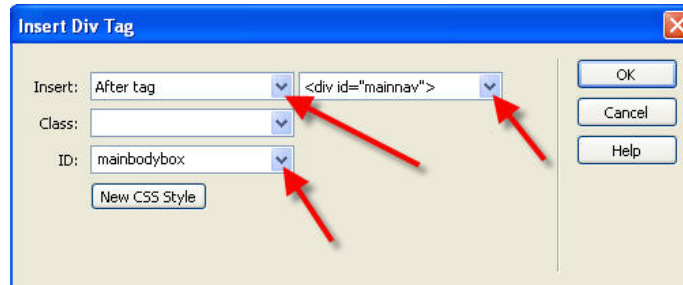
24. Insert | Layout object | div tag | Set the insert dropdown to "after tag " | Select "div id="banner" | set the ID to "mainnav" | OK



25. Click on "div#mainnav" on the bottom bar
26. Click the "New CSS Rule" button at the bottom of the CSS pane.
27. Click the background category | select a background color | OK

Create the mainbodybox Div

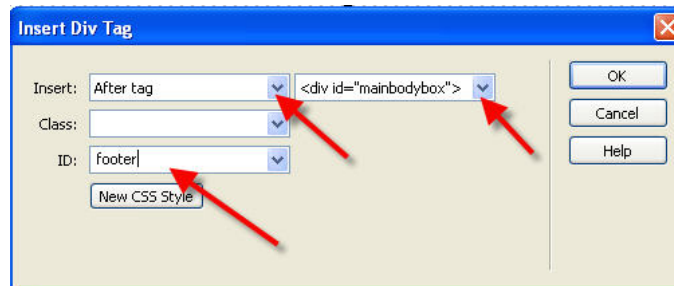
28. Insert | Layout object | div tag | Set the insert dropdown to "after tag " | Select "div id="mainnav" | set the ID to "mainbodybox" | OK



29. Click on "div#mainbodybox" on the bottom bar
30. Click the "New CSS Rule" button at the bottom of the CSS pane.
31. Click the background category | select a background color | OK

Creating the footer Div

32. Insert | Layout object | div tag | Set the insert dropdown to "after tag " | Select "div id="mainbodybox" | set the ID to "footer" | OK



33. Click on "div#mainbodybox" on the bottom bar
34. Click the "New CSS Rule" button at the bottom of the CSS pane.
35. Click the background category | select a background color | OK

Modifying the content

36. Replace the default text in banner
37. Create 3 dummy links in mainnav
38. Replace the default text in mainbodybox sections with dummy text and include several headings.
39. Add your documentation info into the footer including author, email, and last updated information.

Setting Page Properties

Set page properties for this page including settings in the Appearance (CSS), Headings (CSS), and Links (CSS) categories